



What everyone  
fondly remembers.





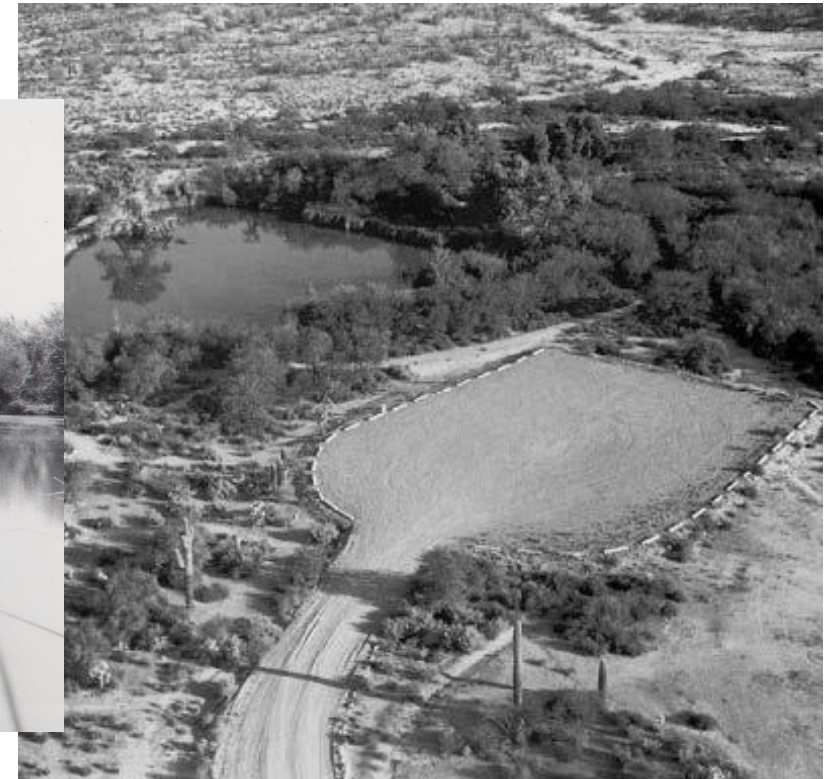
1957, Dominated by  
marsh vegetation.



1962 Redesign



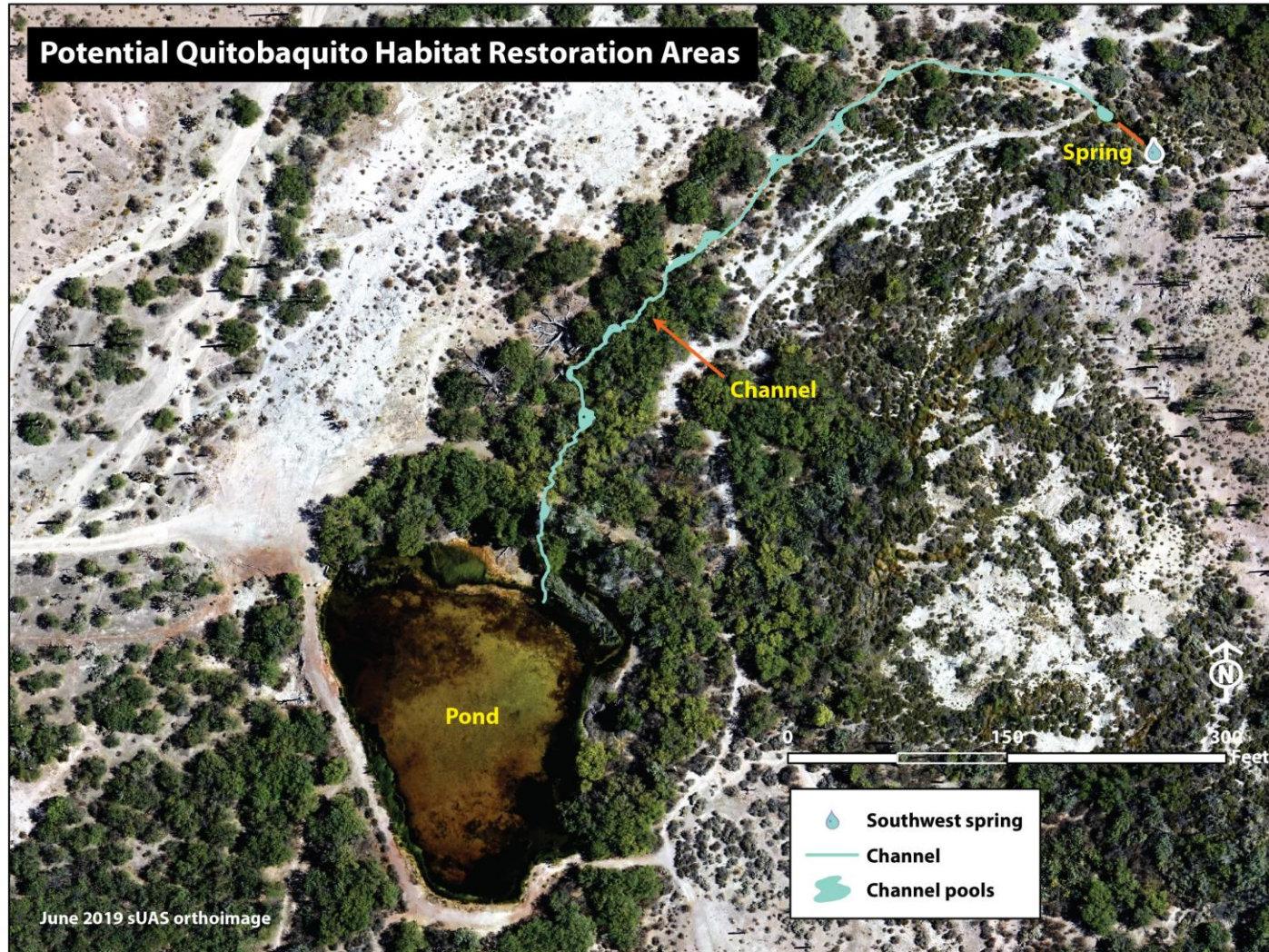
1962 Work Completed



1968 Pond and Parking

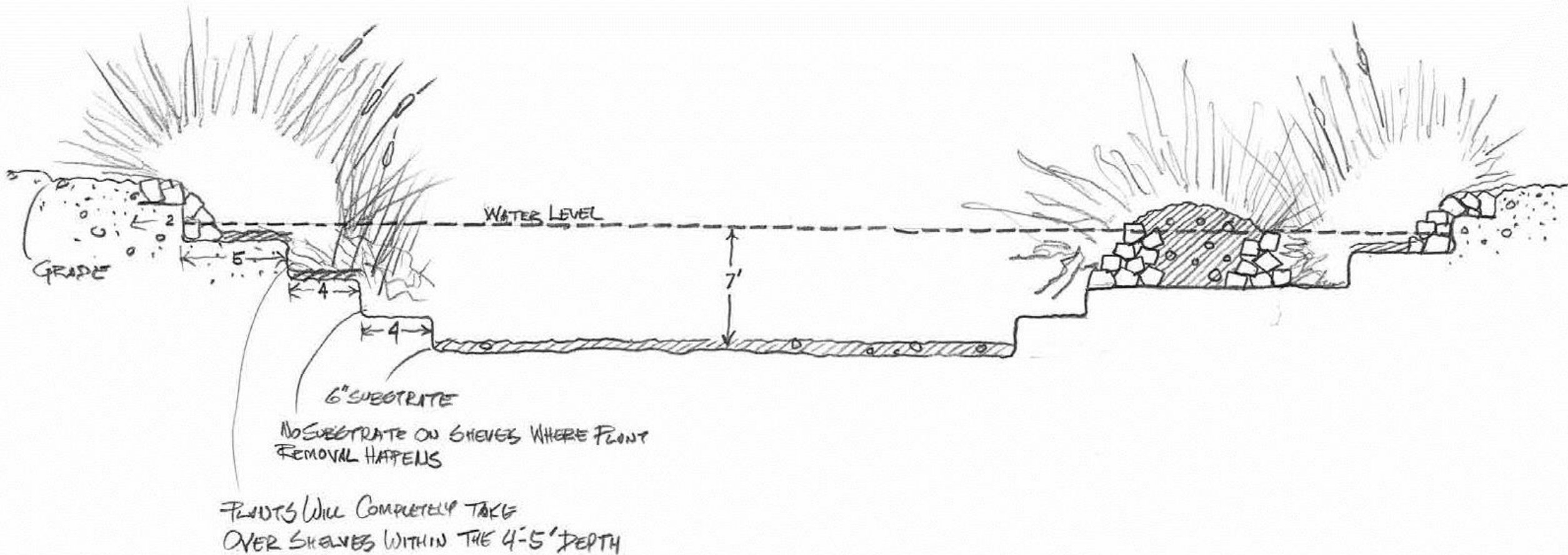


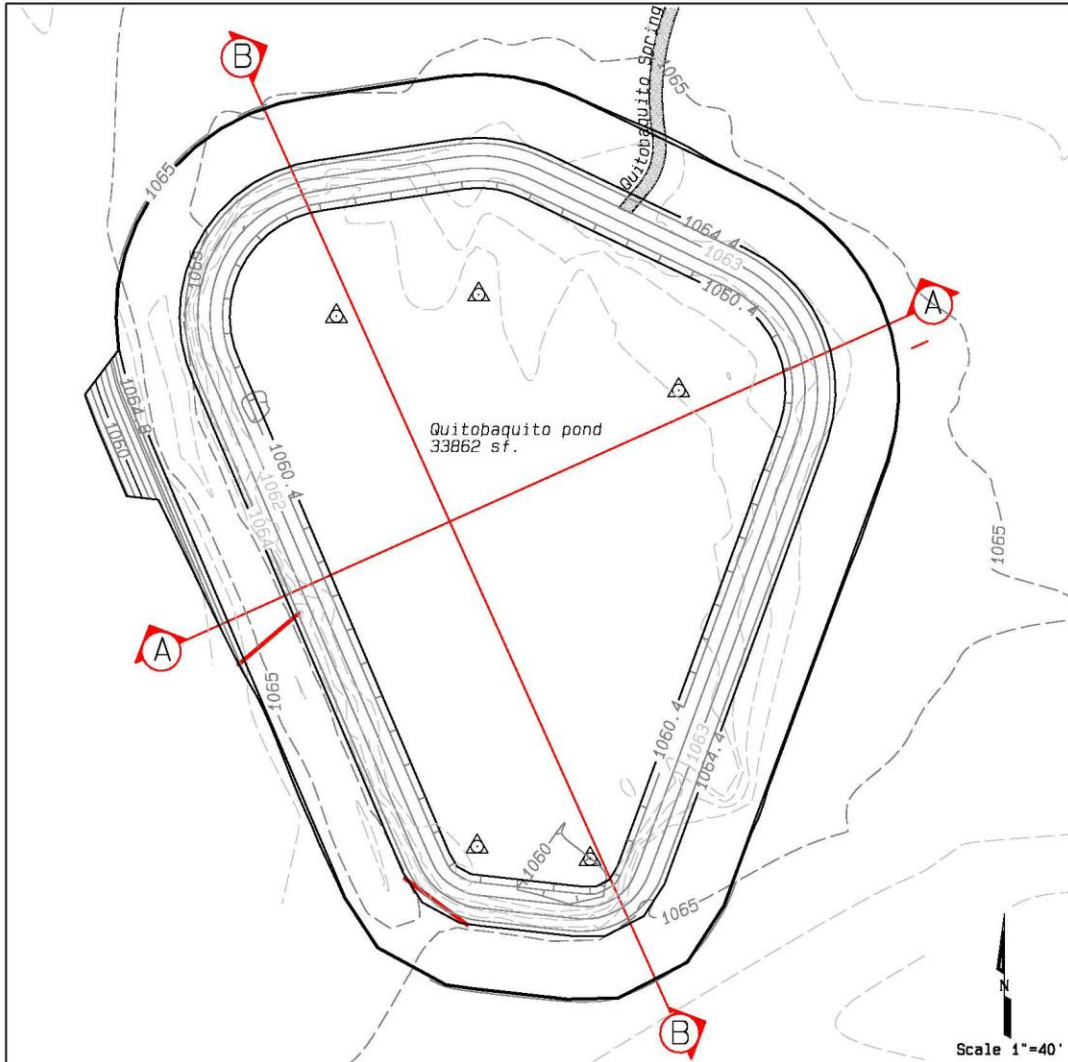
September 9<sup>th</sup>, water steadily rising.





# Concepts for Restoration





**CONSTRUCTION NOTES:**

- 11 Pond to be drained prior to start of construction.
- 12 Clear and grub to limits of excavation.
- 13 Excavate per Over-X Detail, sheet XX. (XX CY)
- 14 Fill and compact to XX% 1" minus soil subgrade per Pond Subgrade Detail, sheet XX. (XX CY)
- 15 Place geomembrane liner. Seams are to be welded per manufacturers specifications. See Liner Detail, sheet XX. (XX SF)
- 16 Place liner rock anchor per Liner Detail, sheet XX. D-50=XX (XX CY).
- 17 Fill and compact to XX% native soil to finish grade. (XX CY)
- 18 Replace 8" pipe spillway to upstream invert elevation of 1063.4'. See pipe spillway detail, sheet XX.
- 19 Construct concrete overflow spillway per Overflow Spillway Detail, sheet XX.
- 20 Plant and seed per Revegetation Detail, sheet XX.

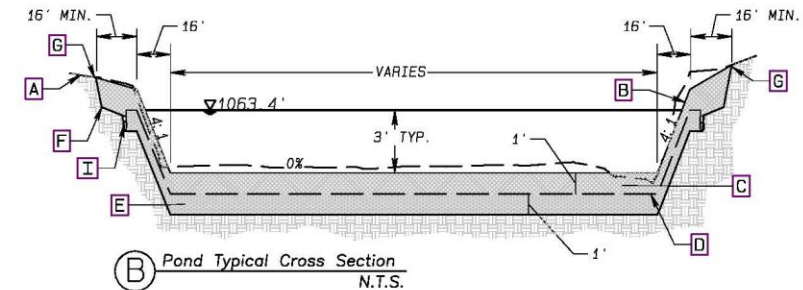
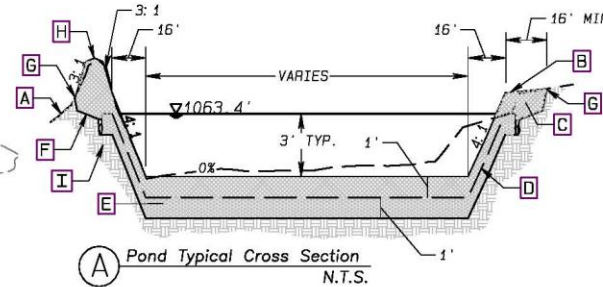
**Pond Location Coordinates**  
AZ State Plane, Central US feet 0202

Point	Nothing	Easting	Elevation
Point Type			
CP1	XX	XX	XX
CR/PI			
CP3	XX	XX	XX
CR/PI			
CP5	XX	XX	XX
CR/PI			
CP2	XX	XX	XX
CR/PI			
CP4	XX	XX	XX
CR/PI			
CP4	XX	XX	XX
CR/PI			

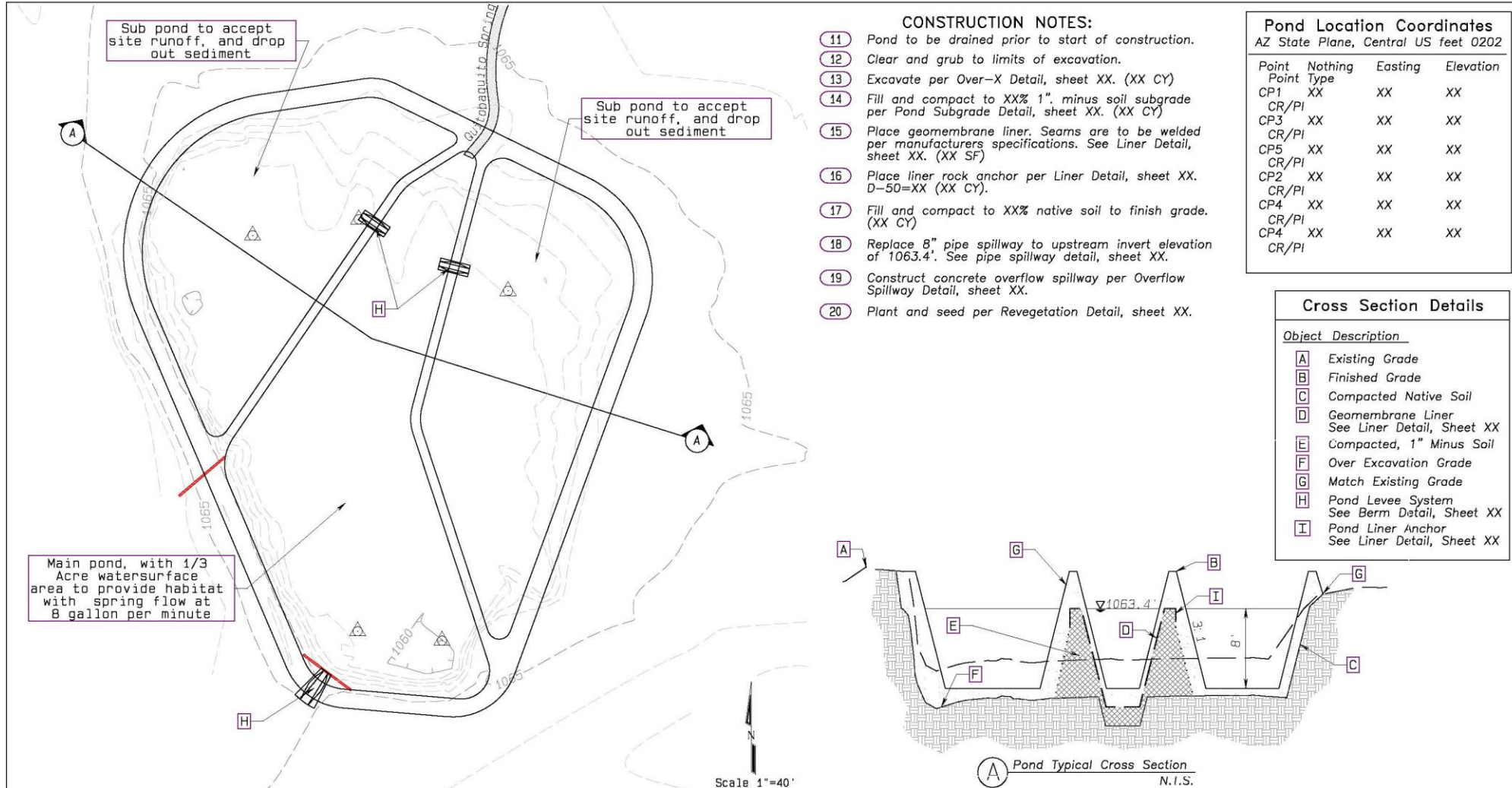
**Cross Section Details**

Object Description

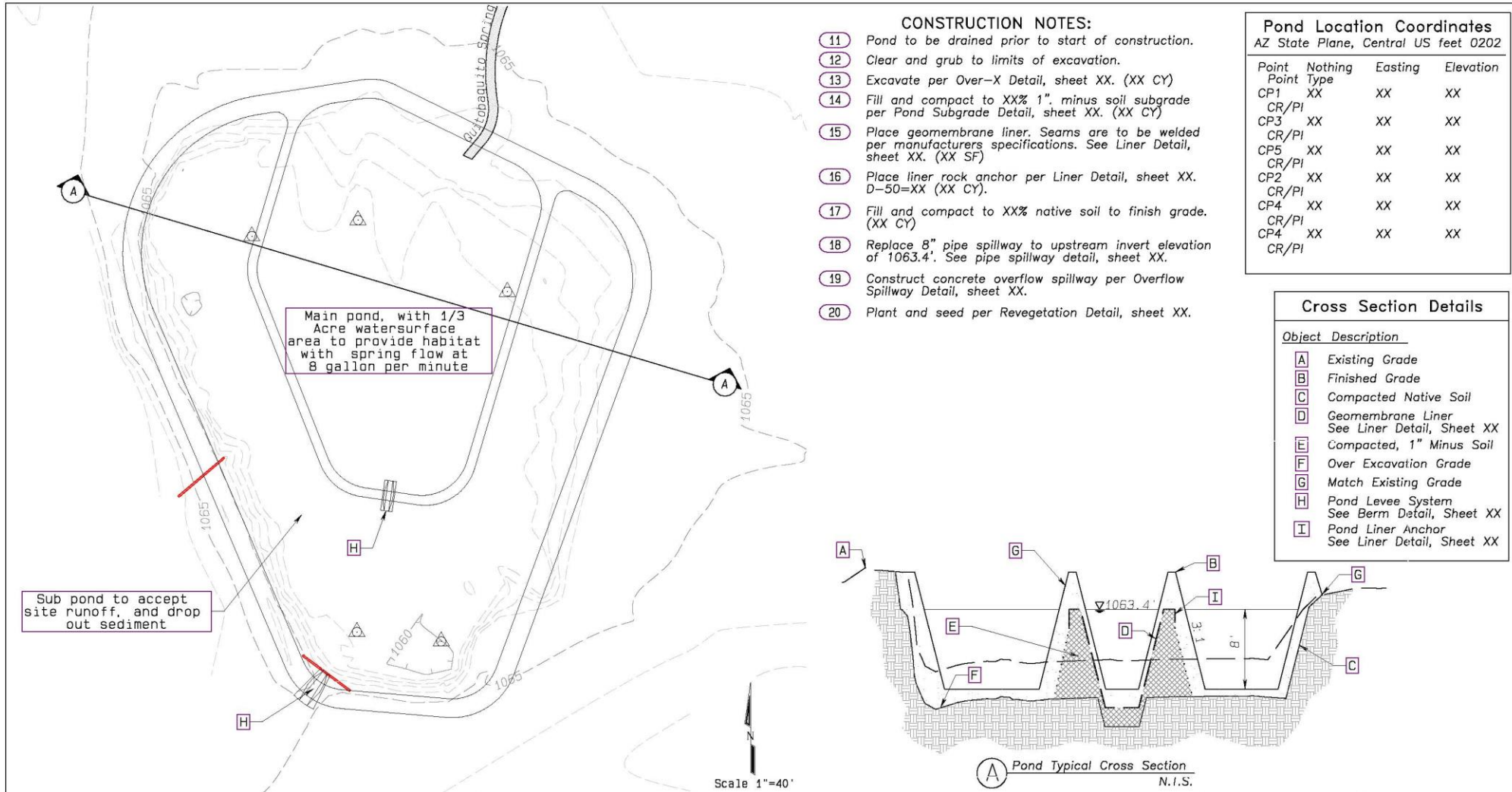
- A Existing Grade
- B Finished Grade
- C Compacted Native Soil
- D Geomembrane Liner  
See Liner Detail, Sheet XX
- E Compacted, 1" Minus Soil
- F Over Excavation Grade
- G Match Existing Grade
- H Pond Levee System  
See Berm Detail, Sheet XX
- I Pond Liner Anchor  
See Liner Detail, Sheet XX

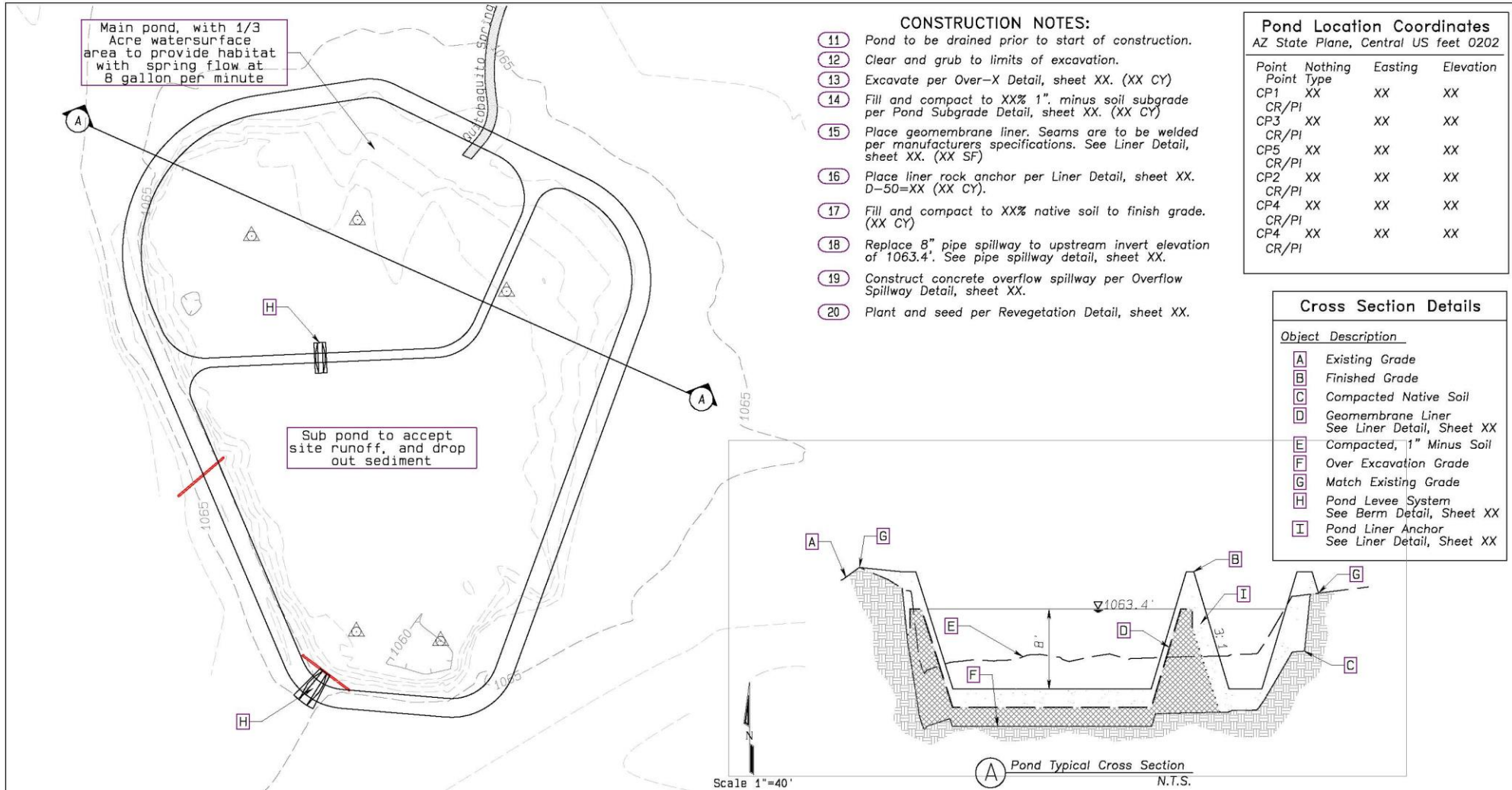


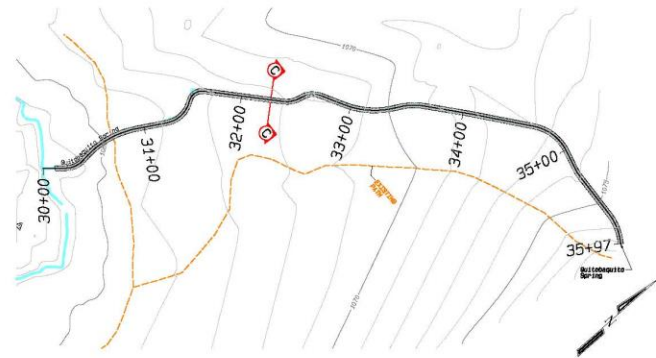
Scale 1"=40'





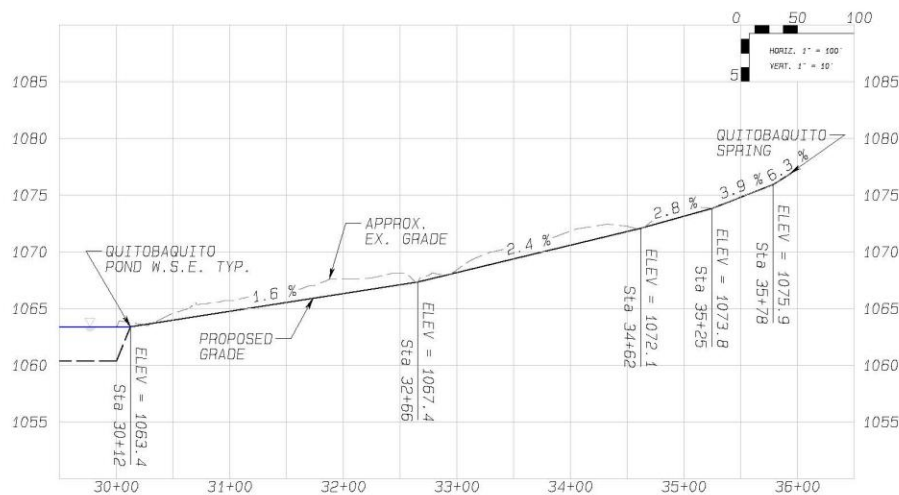




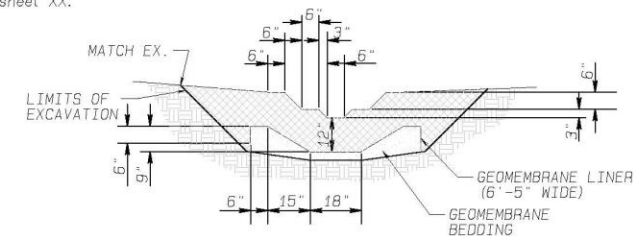


CHANNEL PLAN

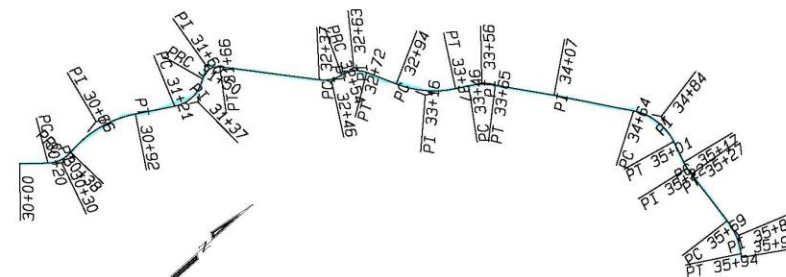
- CONSTRUCTION NOTES:**
- 31 Quitobaquito Spring. Elevation 1076.9'
  - 32 Quitobaquito Pond. W.S.E 1063.4' typical.
  - 33 Clear and grub to limits of excavation.
  - 34 Excavate per Over-X Detail, sheet XX. (XX CY)
  - 35 Fill an compact to XX% 1", minus soil subgrade per Pond Subgrade Detail, sheet XX. (XX CY)
  - 36 Place geomembrane liner. Seams are to be welded per manufacturers specifications. See Liner Detail, sheet XX. (XX SF)
  - 37 Place liner rock anchor per Liner Detail, sheet XX. D-50=XX (XX CY).
  - 38 Fill and compact to XX% native soil to finish grade. (XX CY)
  - 39 Plant and seed per Revegetation Detail, sheet XX.



CHANNEL PROFILE



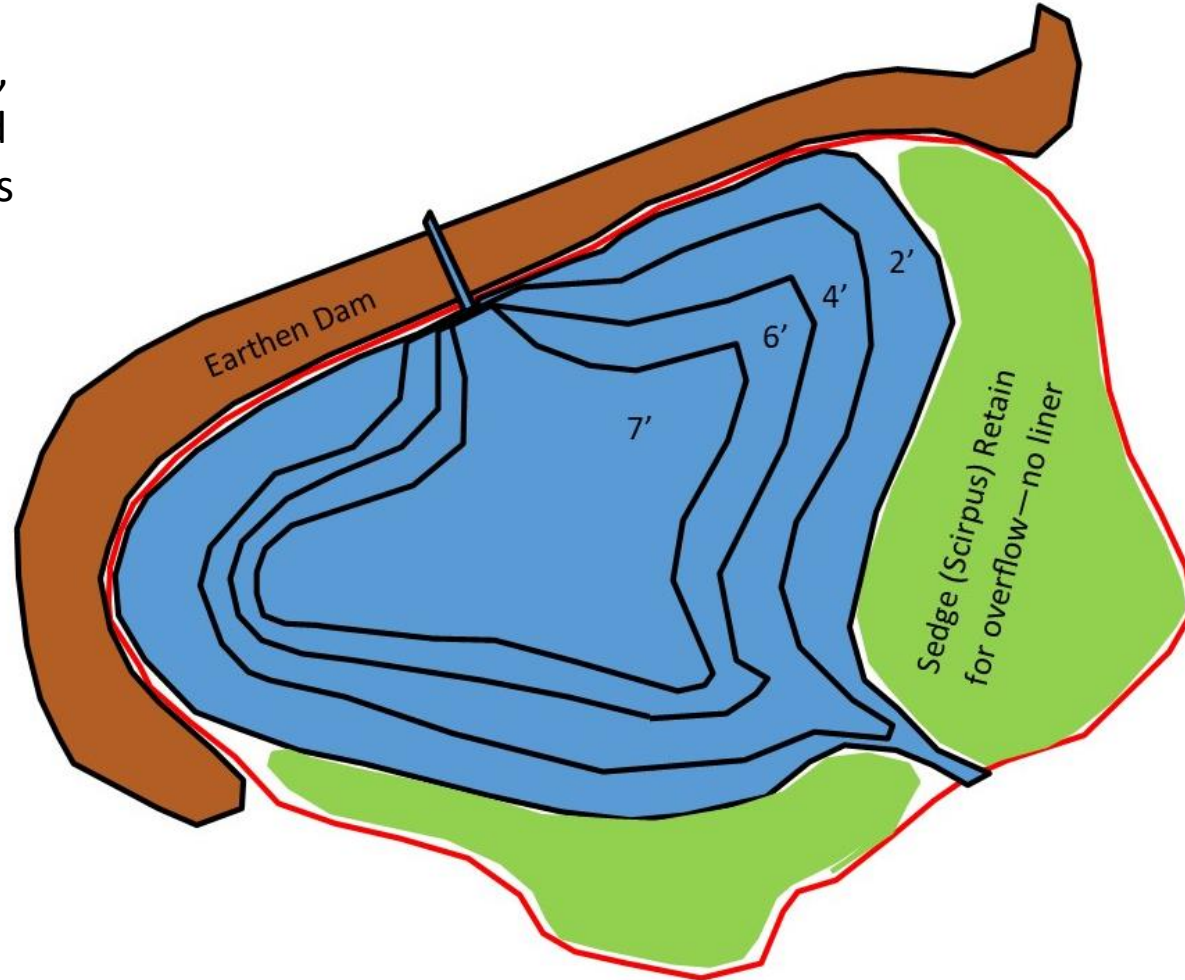
Channel Typical Cross Section  
N.T.S.



CONSTRUCTION LAYOUT:



System with overflow marshes,  
geomembrane liner, contoured  
benches down to 7' and retains  
the existing dam.





The New Quitobaquito: What does it  
look like over the next 100 years



Everyone's thoughts and ideas are  
most welcome!